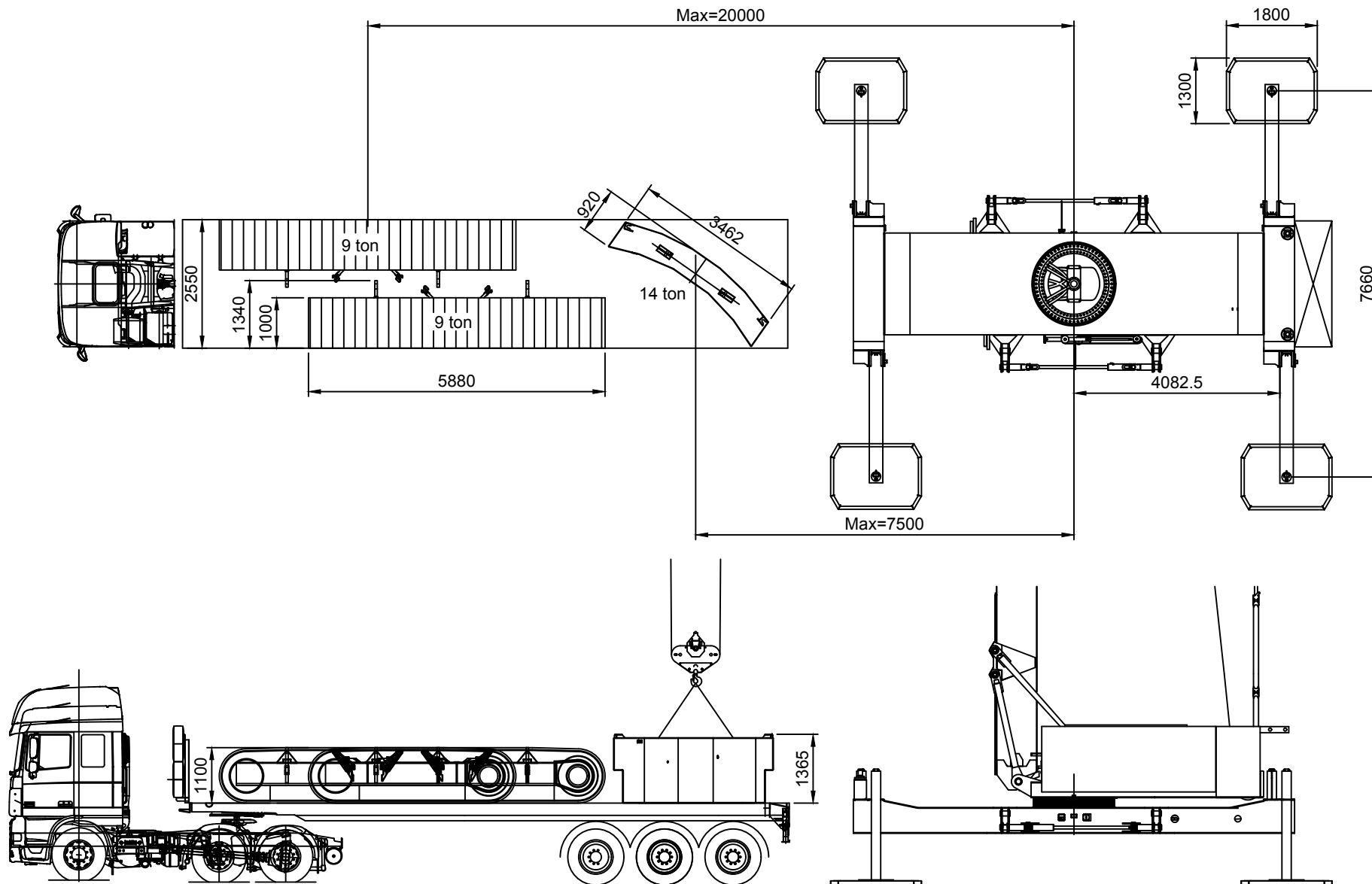


SPIERINGS HYDRAULIC FOLDING CRANE SK 2400 - R

SPIERINGS
MOBILE CRANES

Merwedestraat 15
5347 KZ Oss NL
Tel. +31 (0)412-626964
www.spieringscranes.com



SPIERINGS HYDRAULIC CRANE

SK 2400 - R

SPIERINGS
MOBILE CRANES

Merwedestraat 15
5347 KZ Oss NL
Tel. +31 (0)412-626964
www.spieringscranes.com

071-00240006A

Make: SPIERINGS

Type: SK2400-R

LM1

Crane specification (Jib length 42 m)

Serial Number

Year of construction

Strength / stability : as per EN 13001
 Stability : as per ISO 4305
 Classification : as per ISO 4301-2.A4

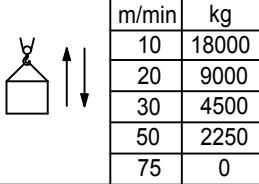
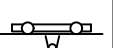
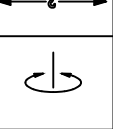
Max. load
18,0 tonne

Max. radius with max. load
13,5 m

Max. capacity
243 tm

Max. jib length
42 m

Max. speed Jib horizontal / 30° luffed

	m/min	kg		
	10	18000		0 - 70 m/min
	20	9000		
	30	4500		0-0,9 r/min
	50	2250		
	75	0		

All motions with hydraulic proportional controls.
 Luffing the jib 30° can be controlled from crane cab or by remote control.

Counterweight Crane : 23880 kg.
 Continuous slewing of the crane (360°) with the outriggers out and support pads down.
 Crane can be driven in its erected position under special conditions (refer user guide).
 The crane should be folded in at wind force 10 (Bf) (24 m/sec) or when not in use for a longer period.

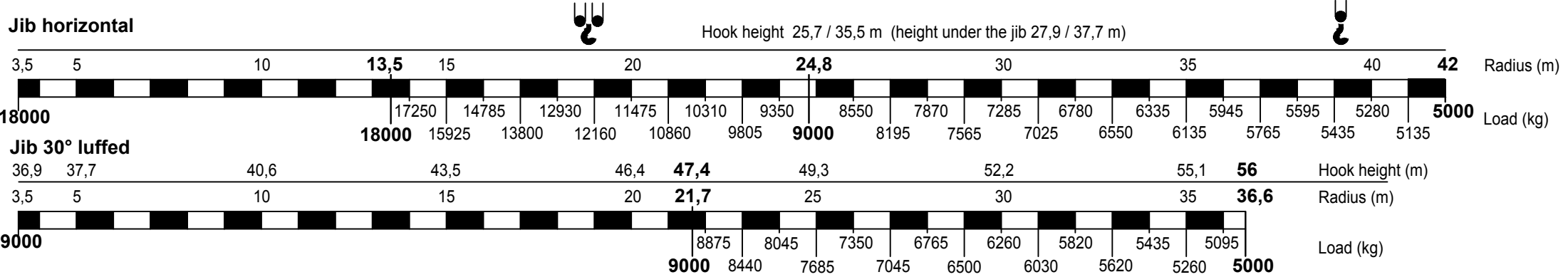
Rated lifting capacity is net capacity.
 Max. line pull force : 4500 kg.
 2 parts of line : 9000 kg.
 4 parts of line : 18000 kg.
 Sail area of the load max.: 1,0 m²/ ton.
 Operating temperature range from: -15°C till +40°C.

Outriggers positioned according to lifting chart
 Outrigger support base : 8,14 x 7,66 m.
 Operation allowed up to wind force 8 Bf (17 m/s)
 Outrigger support base : 8,14 x 5,88 m.
 Operation allowed up to wind force 8 Bf (17 m/s)
 Max. outrigger force: 600 kN.
 In work: tracks of the ground

LIFTING CHART

Outrigger support base 8,14 m x 7,66 m

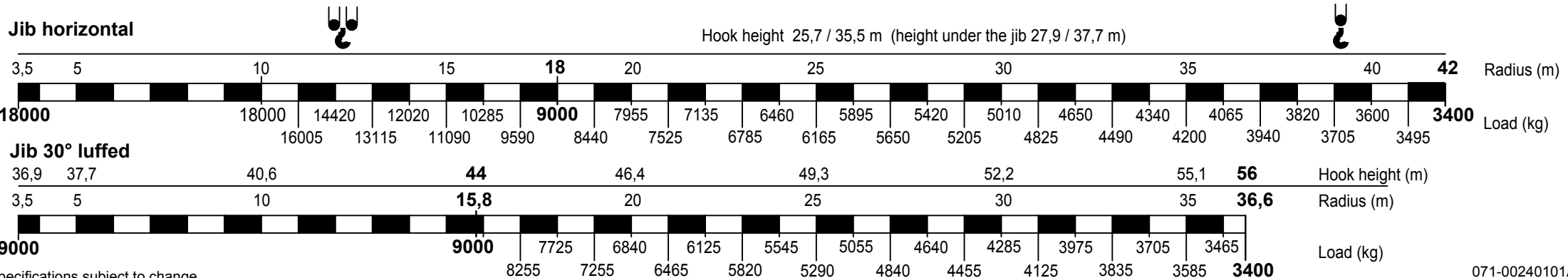
(up to wind force 8 on the Beaufort scale (17 m/sec))



LIFTING CHART

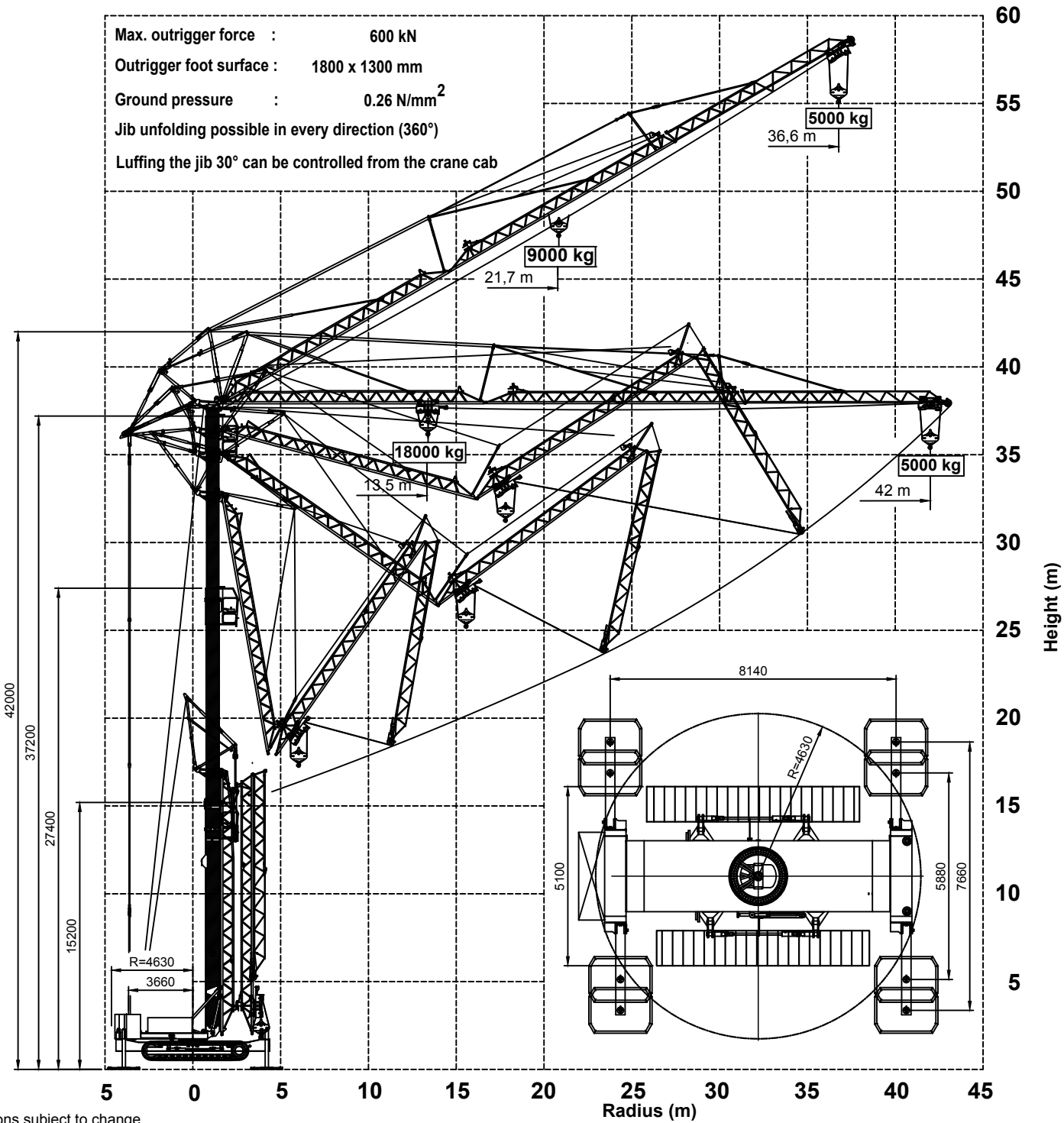
Outrigger support base 8,14 m x 5,88 m

(up to wind force 8 on the Beaufort scale (17 m/sec))



Specifications subject to change

Max. outrigger force : 600 kN
 Outrigger foot surface : 1800 x 1300 mm
 Ground pressure : 0.26 N/mm²
 Jib unfolding possible in every direction (360°)
 Luffing the jib 30° can be controlled from the crane cab



SPIERINGS

HYDRAULIC FOLDING CRANE

SK2400-R

Erection procedure of the crane

SPIERINGS
 MOBILE CRANES
 Merwedestraat 15
 5347 KZ Oss NL
 Tel. +31 (0)412-626964
 www.spieringscranes.com

Specifications subject to change

Crane specification (Jib length 42 m)

Serial Number

Year of construction

Strength / stability : as per EN 13001
 Stability : as per ISO 4305
 Classification : as per ISO 4301-2.A4

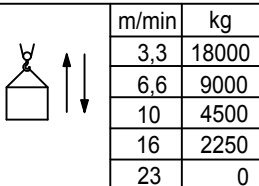
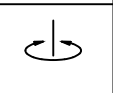
Max. load
18,0 tonne

Max. radius with max. load
14,6 m

Max. capacity
263 tm

Max. jib length
42 m

Max. speed Jib horizontal / 30° luffed

	m/min	kg		0 - 23 m/min
	3,3	18000		
	6,6	9000		
	10	4500		0-0,3 r/min
	16	2250		
23	0			

Hoist and trolley movements are not possible at the same time.
 Reduced crane speeds (1/3 nominal).
 All motions with hydraulic proportional controls.
 Luffing the jib 30° can be controlled from crane cab or by remote control.

Counterweight Crane: 23880 kg.
 Continuous slewing of the crane (360°) with the outriggers out and support pads down.
 Crane can be driven in its erected position under special conditions (refer user guide).
 The crane should be folded in at wind force 10 (Bf) (24 m/sec) or when not in use for a longer period.

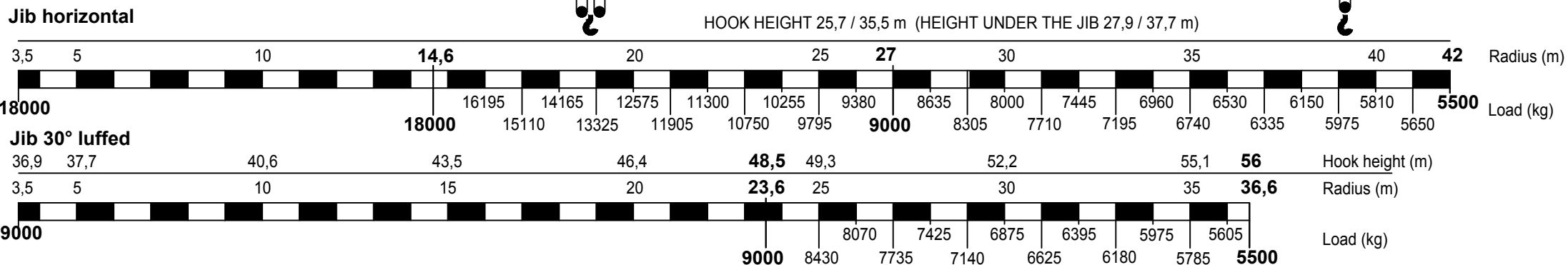
Rated lifting capacity is net capacity.
 Max. line pull force : 4500 kg.
 2 parts of line : 9000 kg.
 4 parts of line : 18000 kg.
 Sail area of the load max.: 1,0 m²/ton.
 Operating temperature range from: -15°C till +40°C.

Outriggers positioned according to lifting chart
 Outrigger support base : 7,95 x 7,63 m.
 Operation allowed up to wind force 7 Bf (14 m/s)
 Outrigger support base : 7,95 x 5,72 m.
 Operation allowed up to wind force 7 Bf (14 m/s)
 Max. outrigger force: 615 kN.
 In work: tracks free of the ground.

LIFTING CHART

Outrigger support base 8,14 m x 7,66 m

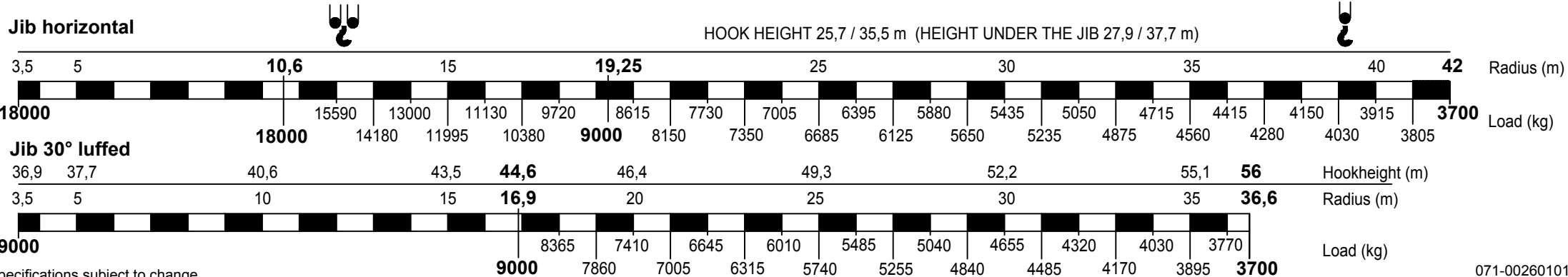
up to wind force 7 on the Beaufort scale (14 m/sec)



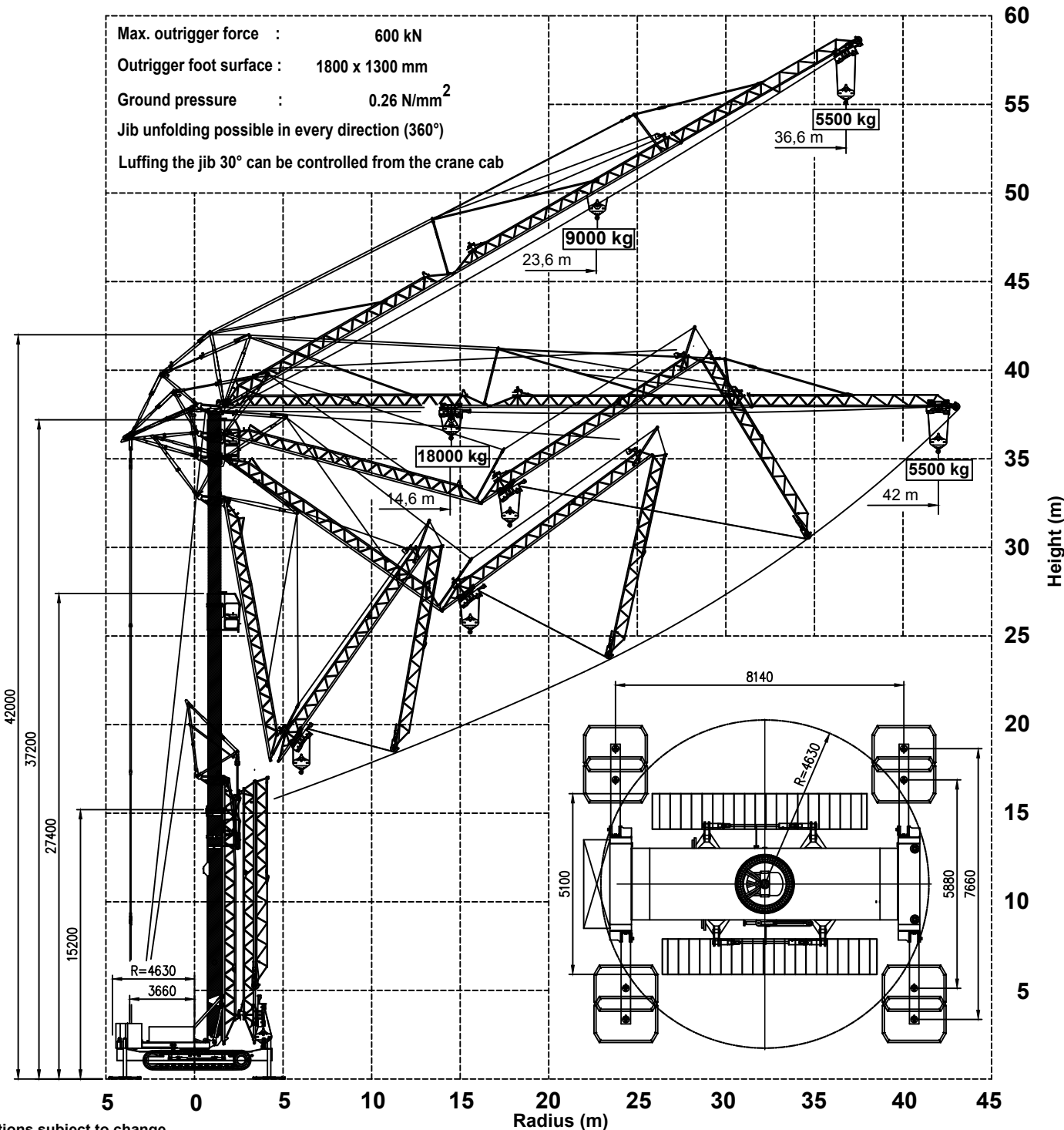
LIFTING CHART

Outrigger support base 8,14 m x 5,88 m

up to wind force 7 on the Beaufort scale (14 m/sec)



Max. outrigger force : 600 kN
 Outrigger foot surface : 1800 x 1300 mm
 Ground pressure : 0.26 N/mm²
 Jib unfolding possible in every direction (360°)
 Luffing the jib 30° can be controlled from the crane cab



SPIERINGS

HYDRAULIC FOLDING CRANE

SK2400-R

Hoist and trolley movements aren't possible at the same time
 Reduced crane speeds (1/3 nominal)

Erection procedure of the crane


SPIERINGS
 MOBILE CRANES

Merwedestraat 15
 5347 KZ Oss NL
 Tel. +31 (0)412-626964
www.spieringscranes.com

071-00260103



		m																			50				
		3,5	6	8	10	12	14	16	18	20	22	24	26	28	30	32	34	36	38	40	42	44	46	48	
	11 LM 2	9000 ^{5.46m}	7822	5184	3810	2967	2398	1987	1676	1434	1239	1079	945	831	734	649	575	510	451	399	352				

kg

		m																			43,7			
		3,5	6	8	10	12	14	16	18	20	22	24	26	28	30	32	34	36	38	40	42	44	46	48
	11 LM 2	9000 ^{4.97m}	6739	4442	3246	2512	2016	1659	1388	1177	1007	868	751	653	568	494	430	368m	352					

kg



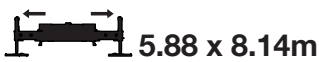
		m																			50			
		3,5	6	8	10	12	14	16	18	20	22	24	26	28	30	32	34	36	38	40	42	44	46	48
	14 LM 1	9000 ^{9.25m}	8138	6459	5324	4505	3886	3403	3014	2695	2429	2203	2008	1840	1692	1561	1445	1341	1247	1163	1085	1015	950	
	14 LM 1	9000 ^{9.47m}	8392	6664	5495	4653	4016	3518	3118	2790	2516	2283	2083	1910	1758	1623	1504	1396	1300					
	11 LM 2	18000 ^{5.96m}	17828	12037	9021	7171	5920	5018	4337	3804	3376	3025	2731	2482	2268	2082	1920	1776	1648	1533	1430			

kg

		m																			43,7			
		3,5	6	8	10	12	14	16	18	20	22	24	26	28	30	32	34	36	38	40	42	44	46	48
	14 LM 1	9000 ^{8.26m}	7008	5547	4559	3847	3309	2889	2551	2273	2041	1844	1676	1529	1400	1287	1186	1095	1014	950				
	14 LM 1	9000 ^{8.46m}	7236	5731	4715	3980	3426	2992	2644	2358	2119	1917	1743	1592	1459	1300	36.8m							
	11 LM 2	9000 ^{8.94m}	7783	6172	5083	4298	3705	3241	2869	2563	2307	2090	1904	1742	1600	1430	36.8m							

kg

Configuratie 2



+ 17500 kg



		m																			50			
		3,5	6	8	10	12	14	16	18	20	22	24	26	28	30	32	34	36	38	40	42	44	46	48
	14 LM 1	9000 ^{9.25m}	8138	6459	5324	4505	3886	3403	3014	2695	2429	2203	2008	1840	1692	1561	1445	1341	1247	1163	1085	1015	950	
	14 LM 1	9000 ^{9.68m}	8634	6859	5659	4793	4140	3628	3218	2880	2599	2360	2154	1976	1820	1682	1559	1449	1350					
	11 LM 2	9000 ^{10.25m}	7385	6100	5173	4473	3925	3485	3124	2822	2566	2346	2156	1988	1840	1709	1591	1485						

kg

		m																			43,7			
		3,5	6	8	10	12	14	16	18	20	22	24	26	28	30	32	34	36	38	40	42	44	46	48
	14 LM 1	9000 ^{8.26m}	7008	5547	4559	3847	3309	2889	2551	2273	2041	1844	1676	1529	1400	1287	1186	1095	1014	950				
	14 LM 1	9000 ^{8.64m}	7446	5901	4856	4102	3533	3088	2730	2437	2191	1983	1805	1649	1513	1350	36.8m							
	11 LM 2	9000 ^{9.14m}	8015	6359	5240	4433	3823	3346	2963	2649	2386	2163	1972	1806	1660	1485	36.8m							

kg



+ 17500 kg



		m																			50			
		3,5	6	8	10	12	14	16	18	20	22	24	26	28	30	32	34	36	38	40	42	44	46	48
	14 LM 1	9000 ^{15.07m}	8380	7287	6433	5747	5183	4712	4313	3970	3672	3411	3180	2975	2791	2625	2475	2339	2214	2100				
	14 LM 1	9000 ^{15.38m}	8590	7472	6597	5895	5318	4836	4427	4076	3771	3504	3268	3058	2870	2700								
	11 LM 2	18000 ^{9.31m}	16465	13176	10953	9349	8138	7191	6430	5805	5283	4840	4460	4130	3841	3585	3357	3154	2970					

kg

		m																			43,7			
		3,5	6	8	10	12	14	16	18	20	22	24	26	28	30	32	34	36	38	40	42	44	46	48
	14 LM 1	9000 ^{13.32m}	8477	7218	6268	5525	4928	4437	4028	3680	3382	3123	2896	2695	2516	2356	2212	2100						
	14 LM 1	9000 ^{13.61m}	8697	7408	6434	5673	5061	4559	4139	3783	3478	3212	2980	2700										
	11 LM 2	9000 ^{14.60m}	8069	7014	6190	5527	4983	4529	4143	3812	3525	3273	2970											

kg

≤ 9000 kg

≤ 18000 kg



= m/s

= 50m / 0°
 = 42m / 0°

= 50m / 30°
 = 42m / 30°



				3,5	6	8	10	12	14	16	18	20	22	24	26	28	30	32	34	36	38	40	42	44	46	48	50
	14	LM 1	9000			8.74m	7559	5992	4932	4168	3591	3139	2777	2479	2230	2019	1838	1680	1542	1421	1312	1215	1128	1048	976	910	850
	14	LM 1	9000			9.05m	7909	6274	5169	4371	3769	3298	2920	2610	2350	2130	1941	1777	1633	1506	1393	1291	1200				
	11	LM 2	9000			9.55m	8489	6742	5561	4709	4065	3562	3158	2826	2549	2314	2112	1936	1782	1647	1526	1418	1320				

kg

				3,5	6	8	10	12	14	16	18	20	22	24	26	28	30	32	34	36	38	40	42	44	46	48	50
--	--	--	--	-----	---	---	----	----	----	----	----	----	----	----	----	----	----	----	----	----	----	----	----	----	----	----	----

	14	LM 1	9000	7.82m	8727	6504	5141	4219	3554	3052	2659	2344	2085	1868	1685	1527	1390	1270	1164	1070	985	909	850					
	14	LM 1	9000	8.09m		6815	5391	4429	3735	3211	2801	2471	2201	1975	1783	1619	1476	1351	1200									
	11	LM 2	9000	8.53m		7320	5799	4771	4029	3469	3031	2679	2390	2148	1943	1767	1615	1481	1320									

kg



				3,5	6	8	10	12	14	16	18	20	22	24	26	28	30	32	34	36	38	40	42	44	46	48	50
	14	LM 1	9000			13.55m	8652	7369	6400	5643	5034	4534	4117	3762	3458	3194	2962	2758	2576	2413	2266	2123	2012	1901	1800		
	14	LM 1	9000			13.90m	8926	7605	6608	5827	5201	4686	4256	3891	3578	3306	3067	2857	2669	2501	2350						
	11	LM 2	18000	8.47m	14604	11675	9694	8266	7188	6344	5667	5110	4645	4251	3912	3618	3360	3133	2930	2749	2585						

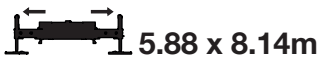
kg

				3,5	6	8	10	12	14	16	18	20	22	24	26	28	30	32	34	36	38	40	42	44	46	48	50
--	--	--	--	-----	---	---	----	----	----	----	----	----	----	----	----	----	----	----	----	----	----	----	----	----	----	----	----

	14	LM 1	9000			12.00m	7455	6339	5496	4837	4308	3873	3509	3201	2937	2707	2505	2328	2169	2027	1900	1800					
	14	LM 1	9000			12.32m	7701	6551	5682	5003	4457	4009	3634	3317	3044	2807	2599	2350									
	11	LM 2	9000			13.19m	8370	7126	6187	5453	4863	4378	3973	3630	3335	3079	2855	2585									

kg

Configuratie 4



				3,5	6	8	10	12	14	16	18	20	22	24	26	28	30	32	34	36	38	40	42	44	46	48	50
	17	LM 1	9000			12.03m	7477	6358	5513	4852	4321	3885	3521	3212	2946	2515	2336	2177	2035	1906	1790	1790	1685	1588	1500		
	17	LM 1	9000			12.64m	7946	6762	5867	5168	4606	4144	3759	3432	3151	2907	2693	2504	2336	2186	2050						
	14	LM 2	9000			13.50m	8616	7338	6373	5618	5012	4514	4098	3745	3442	3179	2949	2745	2564	2401	2255						

kg

				3,5	6	8	10	12	14	16	18	20	22	24	26	28	30	32	34	36	38	40	42	44	46	48	50
--	--	--	--	-----	---	---	----	----	----	----	----	----	----	----	----	----	----	----	----	----	----	----	----	----	----	----	----

	17	LM 1	9000			10.68m	7783	6433	5460	4724	4149	3687	3308	2991	2722	2492	2291	2115	1960	1822	1698	1587	1500				
	17	LM 1	9000			11.22m	8277	6847	5816	5037	4428	3939	3537	3201	2917	2672	2460	2274	2050								
	14	LM 2	9000			11.97m	8973	7431	6318	5478	4821	4293	3859	3497	3190	2926	2697	2496	2319								

kg



				3,5	6	8	10	12	14	16	18	20	22	24	26	28	30	32	34	36	38	40	42	44	46	48	50
	17	LM 1	9000			17.09m	8471	7487	6697	6049	5507	5047	4652	4309	4009	3743	3507	3295	3105	2932	2775	2632	2500				
	17	LM 1	9000			18.97m	8466	7580	6852	6244	5729	5286	4901	4564	4266	4001	3764	3550									
	14	LM 2	18000	11.34m	16822	14008	11978	10446	9247	8284	7493	6833	6272	5791	5373	5007	4683	4395	4137	3905							

kg

				3,5	6	8	10	12	14	16	18	20	22	24	26	28	30	32	34	36	38	40	42	44	46	48	50
--	--	--	--	-----	---	---	----	----	----	----	----	----	----	----	----	----	----	----	----	----	----	----	----	----	----	----	----

	17	LM 1	9000			15.09m	8391	7297	6442	5754	5190	4719	4319	3975	3677	3416	3185	2979	2795	2629	2500						
	17	LM 1	9000			16.73m	8261	7300	6529	5895	5366	4917	4531	4196	3903	3550											
	14	LM 2	9000			18.04m	7980	7142	6453	5878	5390	4971	4607	4288	3905												

kg



			3,5	6	8	10	12	14	16	18	20	22	24	26	28	30	32	34	36	38	40	42	44	46	48	50
	17	LM 1				9000	8795 ^{11.78m}	7281	6190	5365	4720	4202	3777	3421	3120	2861	2636	2439	2265	2110	1972	1847	1733	1630	1536	1450
	17	LM 1				9000		7456 ^{12.00m}	6340	5497	4838	4308	3873	3510	3202	2937	2707	2506	2328	2170	2028	1900				
	14	LM 2				9000		8077 ^{12.81m}	6874	5966	5256	4685	4216	3825	3493	3208	2960	2743	2551	2381	2228	2090				

kg



			3,5	6	8	10	12	14	16	18	20	22	24	26	28	30	32	34	36	38	40	42	43,7
	17	LM 1				9000	7579 ^{10.46m}	6263	5313	4596	4035	3584	3214	2905	2643	2417	2222	2050	1899	1764	1644	1535	1450
	17	LM 1				9000		7768 ^{10.67m}	6421	5449	4715	4141	3680	3301	2985	2717	2486	2286	2111	1900 ^{36.8m}			
	14	LM 2				9000		8413 ^{11.36m}	6961	5914	5123	4505	4008	3600	3259	2970	2722	2506	2317	2090 ^{36.8m}			

kg



			3,5	6	8	10	12	14	16	18	20	22	24	26	28	30	32	34	36	38	40	42	44	46	48	50
	17	LM 1				9000				8471 ^{17.09m}	7487	6697	6049	5507	5047	4652	4309	4009	3743	3507	3295	3105	2932	2775	2632	2500
	17	LM 1				9000				8706 ^{17.50m}	7697	6886	6221	5664	5193	4787	4436	4127	3855	3613	3396	3200				
	14	LM 2			18000					15321 ^{10.51m}	12750	10896	9495	8400	7521	6798	6195	5683	5243	4861	4527	4231	3968	3732	3520	

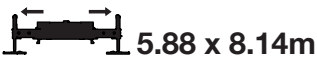
kg



			3,5	6	8	10	12	14	16	18	20	22	24	26	28	30	32	34	36	38	40	42	43,7	
	17	LM 1				9000				8391 ^{15.09m}	7297	6442	5754	5190	4719	4319	3975	3677	3416	3185	2979	2795	2629	2500
	17	LM 1				9000				8632 ^{15.45m}	7509	6630	5924	5345	4861	4450	4097	3791	3523	3200 ^{36.8m}				
	14	LM 2				9000				8196 ^{16.62m}	7243	6477	5848	5322	4877	4494	4161	3870	3520 ^{36.8m}					

kg

Configuratie 6



			3,5	6	8	10	12	14	16	18	20	22	24	26	28	30	32	34	36	38	40	42	44	46	48	50
	17	LM 1				9000				7879 ^{16.08m}	6960	6222	5616	5109	4680	4311	3990	3710	3462	3241	3043	2865	2704	2557	2423	2300
	17	LM 1				9000				7965 ^{16.23m}	7037	6291	5679	5167	4733	4360	4037	3753	3503	3280	3080	2900				
	14	LM 2			18000					17528 ^{9.79m}	14034	11671	9968	8681	7675	6866	6202	5648	5177	4773	4422	4115	3843	3602	3385	3190

kg



			3,5	6	8	10	12	14	16	18	20	22	24	26	28	30	32	34	36	38	40	42	43,7	
	17	LM 1				9000				7805 ^{14.20m}	6783	4983	5341	4814	4373	3999	3678	3400	3156	2940	2748	2576	2421	2300
	17	LM 1				9000				7898 ^{14.34m}	6864	6056	5406	4873	4428	4050	3725	3444	3197	2900 ^{36.8m}				
	14	LM 2				9000				8608 ^{13.72m}	7487	6611	5907	5329	4846	4437	4085	3779	3512	3190 ^{36.8m}				

kg



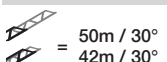
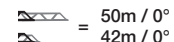
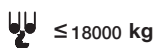
			3,5	6	8	10	12	14	16	18	20	22	24	26	28	30	32	34	36	38	40	42	44	46	48	50
	17	LM 1				9000				8471 ^{17.09m}	7487	6697	6049	5507	5047	4652	4309	4009	3743	3507	3295	3105	2932	2775	2632	2500
	17	LM 1				18000				16099 ^{12.73m}	13778	12025	10654	9553	8649	7893	7252	6702	6224	5805	5435	5106	4811	4545		
	14	LM 2			18000					17584 ^{13.72m}	15056	13147	11654	10454	9469	8646	7948	7349	6828	6372	5969	5610	5289	5000		

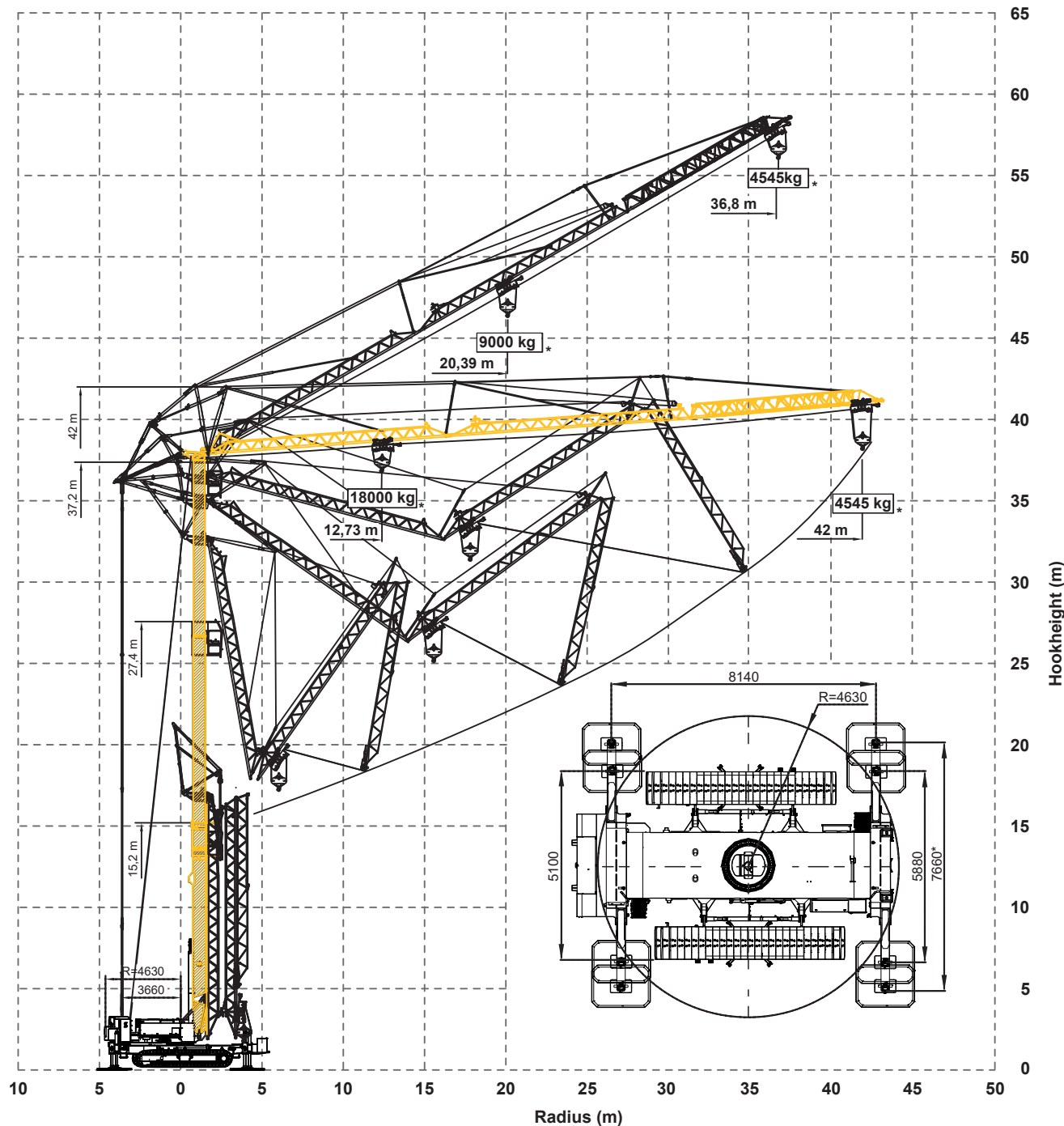
kg



			3,5	6	8	10	12	14	16	18	20	22	24	26	28	30	32	34	36	38	40	42	43,7	
	17	LM 1				9000				8391 ^{15.09m}	7297	6442	5754	5190	4719	4319	3975	3677	3416	3185	2979	2795	2629	2500
	17	LM 1				9000					8247 ^{20.39m}	7459	6801	6243	5764	5348	4983	4545						
	14	LM 2				9000						8174 ^{22.07m}	7457	6849	6327	5874	5477	5000 ^{36.8m}						

kg

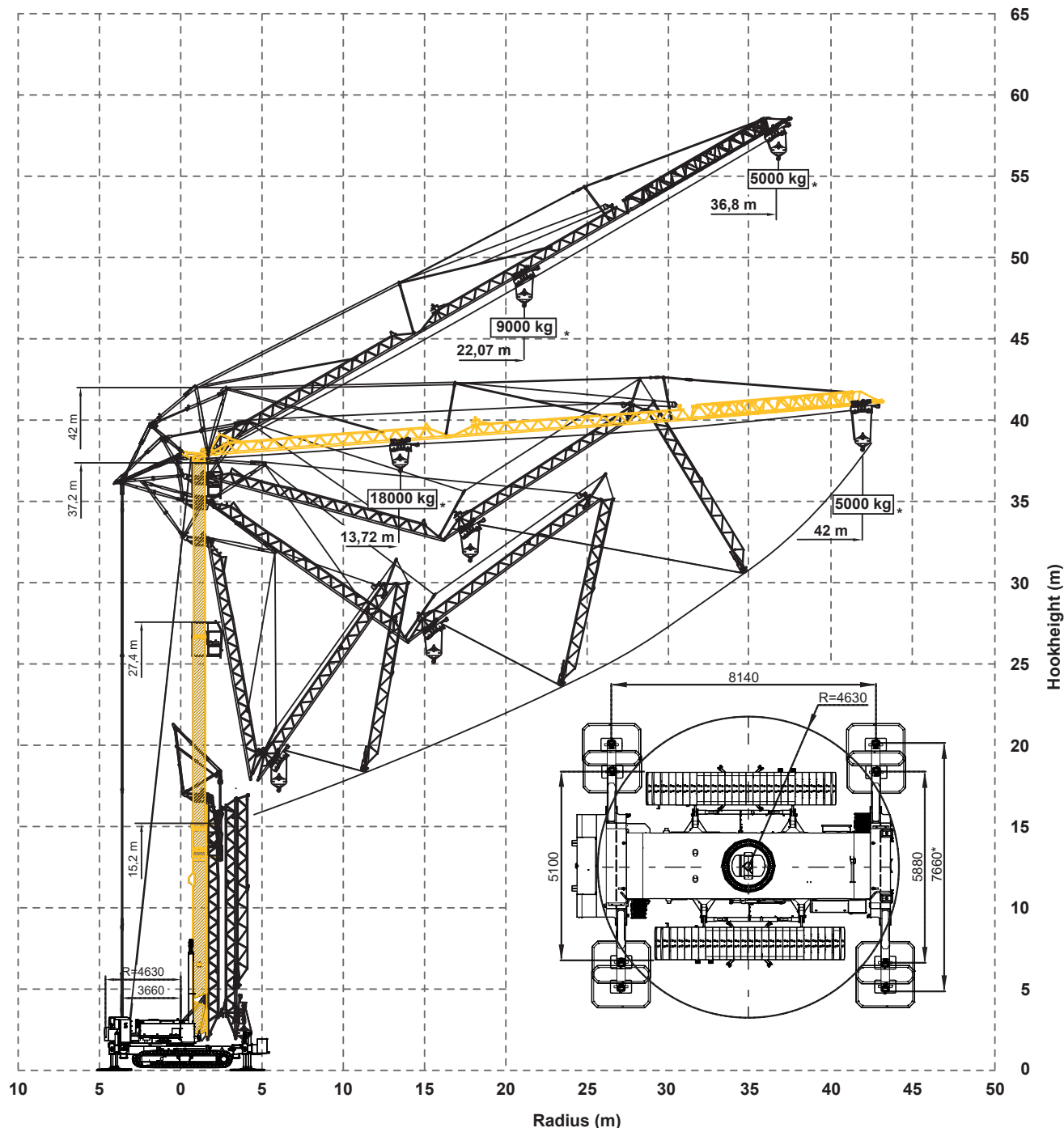




Erecting procedure of the crane

- Max. outrigger force : 600 KN
- Outrigger support pads : 1800x1300 mm
- Ground pressure : 0,26 N/mm²

Jib can be unfolded through 360°
Luffing the jib 30° can be controlled from the crane cab or remote control

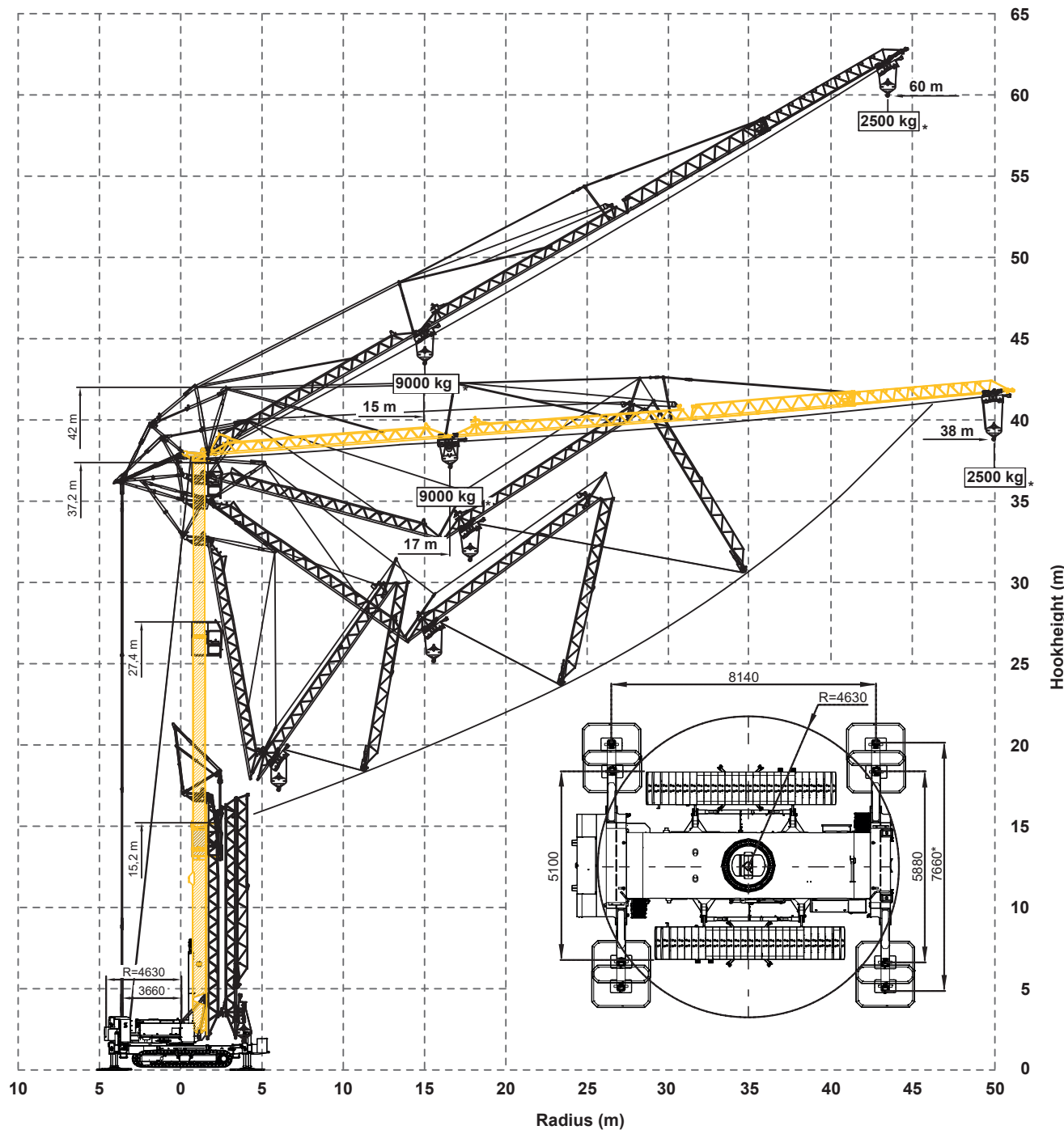


Erecting procedure of the crane

Max. outrigger force : 615 KN
 Outrigger support pads : 1800x1300 mm
 Ground pressure : 0,26 N/mm²

Jib can be unfolded through 360°
 Luffing the jib 30° can be controlled from the crane cab or remote control

Hoist and trolley movements aren't possible at the same time
 Reduced crane speeds (1/3 nominal)



Erecting procedure of the crane

Max. outrigger force : 520 KN
 Outrigger support pads : 1800x1300 mm
 Ground pressure : 0,22 N/mm²

Jib can be unfolded through 360°
 Luffing the jib 30° can be controlled from
 the crane cab or remote control

